

## *Performance Test*

Comparing Marathi Text Input Using  
Swarchakra-with-Prediction to a  
Version Without.

Abhijith  
Herold  
Vivek

*To find out*

If providing prediction  
improves text-input speed

Provided novices and  
advanced beginners  
with identical devices running one of  
the Swarchakra Keyboards

# *Phrase Difficulty Levels*

8 Easy

14 Medium

8 Hard

30 Phrases in Total

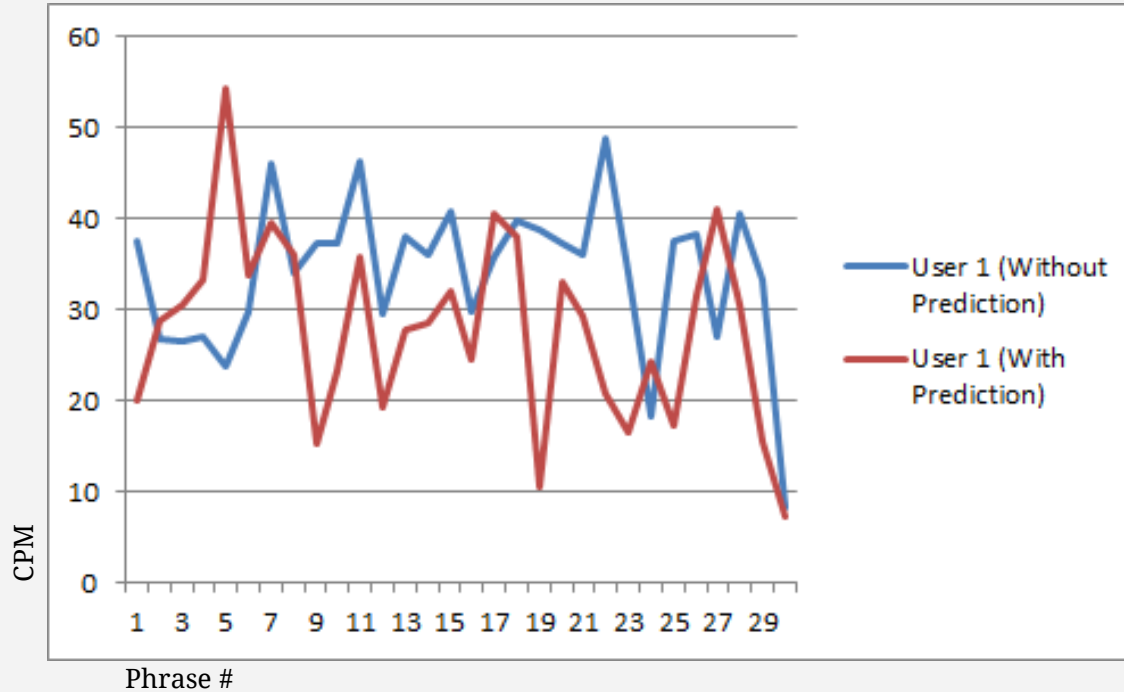
## *Corpus Details*

111 unique words in total  
30 of these available in corpus  
Corpus strength: 688 words

## *User Testing Status*

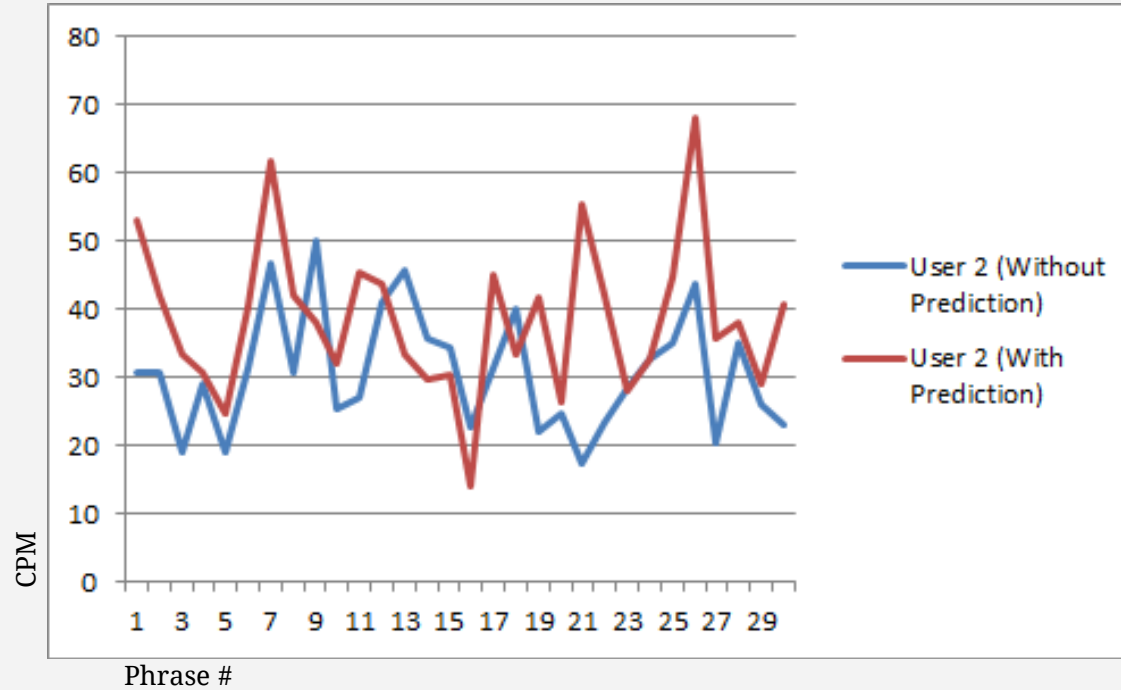
- 4 Users
- At this point
  - 1 Session completed for 1 user
  - 2 Sessions each for 3 users
- Alternating sessions without and with prediction enabled (in that order)
- Time taken per session: 15-20 min
- Overall 5 sessions completed

## Swarchakra With vs Without Prediction\* (For one session)



\*Intermediate Observations

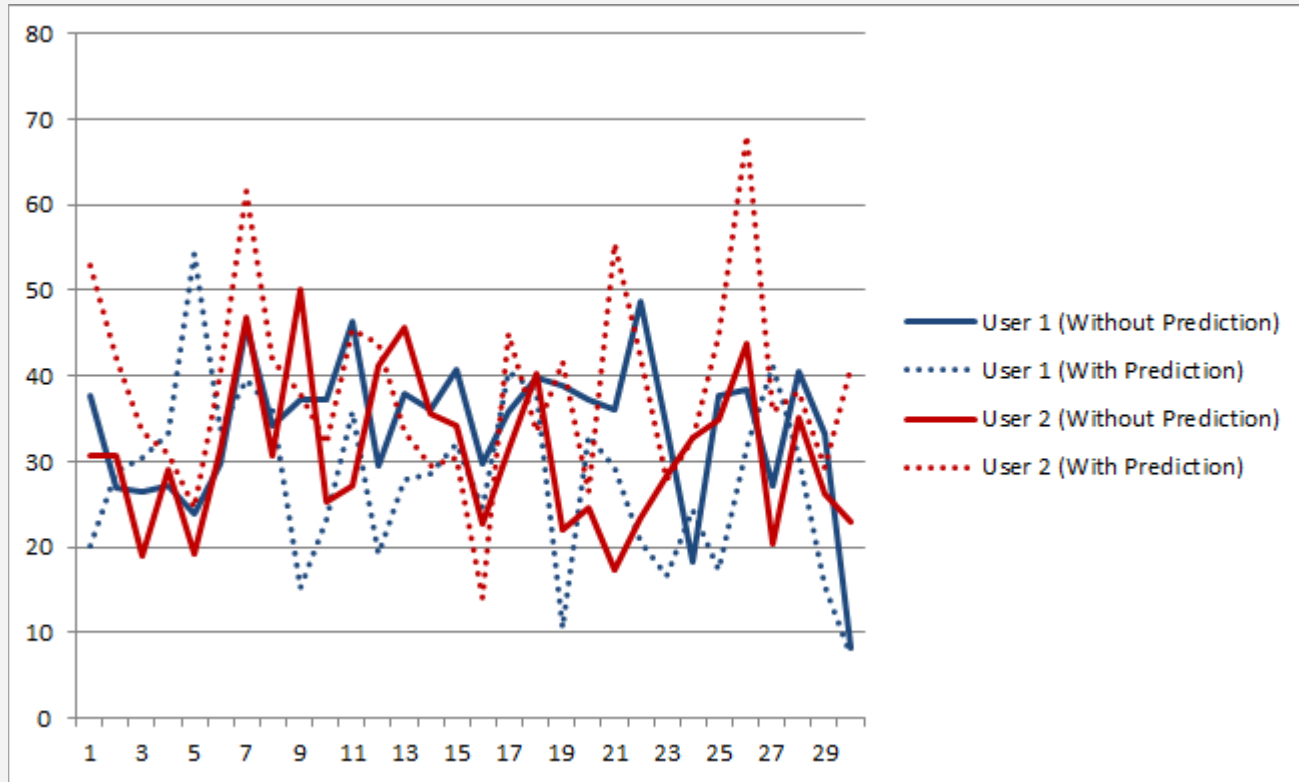
## Swarchakra With vs Without Prediction\* (For one session)



\*Intermediate Observations



## Comparing 2 Users



## *Observations*

**Predicted words were  
often not picked.**

(Only 8/30 predictions picked by User 2)

*Thanks to:*

Manjiri, Shashank and the Swarchakra Team  
Prasad, Ajinkya, Pritesh, Varun, Mayur